

## Summer Camp 2025 Lead Teaching Staff

Class**	Block One		Block Two		Block Three	
	June 2- 6	June 9 - 13	June 16 - 20*	June 23 - 27	June 30 -July 4	July 7 - 11
Toddler 1s/2s	Alex Zapien		Alex Zapien		Alex Zapien	
Toddler 2s/3s	Ashley Ruiz		Ashley Ruiz & Emily Samora		Ashley Ruiz & Emily Samora	
Preschool 3s/4s	Erin Kelly		Erin Kelly		Erin Kelly	
Preschool 4s/5s	Emily Cleveland		Emily Cleveland		Emily Cleveland	
K-1	Karysa Horst		Karysa Horst		Karysa Horst	
2nd -6th	Jay Cleveland		Jay Cleveland		Jay Cleveland & Diane Hughes	

\* No School on June 19 & July 4

\*\* Classroom placement determined by admin depending on enrollment availability

### 2025 Summer Camp Tuition Rates

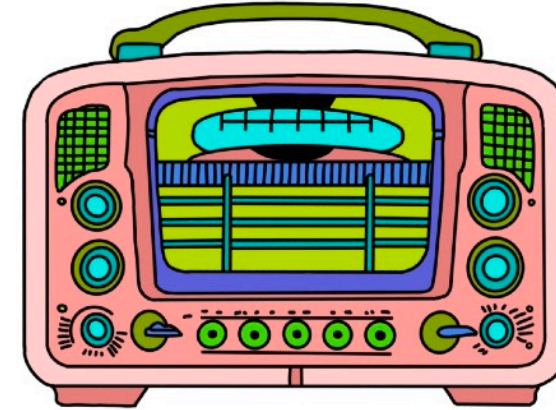
Priority registration for current students for 6-week enrollment begins February 18 thru February 21, 2025.  
6-week open enrollment begins February 24 - Individual week enrollment begins March 3.

Toddler	5 Full Day	5 Half Day	3 Full Day	3 Half Day	2 Full Day	2 Half Day
Weekly rate	\$345	\$320	\$300	\$280	\$260	\$250
6-Week Rate	<del>\$2070</del> \$1,870	<del>\$1920</del> \$1,720	<del>\$1800</del> \$1,600	<del>\$1680</del> \$1,480	<del>\$1560</del> \$1,360	<del>\$1500</del> \$1,300
Deposit	\$935	\$860	\$800	\$740	\$680	\$650
Preschool	5 Full Day	5 Half Day	3 Full Day	3 Half Day	2 Full Day	2 Half Day
Weekly rate	\$335	\$295	\$290	\$270	\$250	\$240
6-Week Rate	<del>\$2010</del> \$1,810	<del>\$1770</del> \$1,570	<del>\$1740</del> \$1,540	<del>\$1620</del> \$1,420	<del>\$1500</del> \$1,300	<del>\$1440</del> \$1,240
Deposit	\$905	\$785	\$770	\$710	\$650	\$620
K- 6	5 Full Day	* 6-week enrollment price reflects a \$200 discount				
Weekly rate	\$320					
6-Week Rate	<del>\$1920</del> \$1,720					
Deposit	\$860					

#### Before & After School Child Care

Before School 7:30 - 9:00 am	After School Childcare - Hours for all students 3:00 - 5:30 pm
Included with tuition	<ul style="list-style-type: none"> <li>• \$8 per hour - billed hourly on the hour beginning at 3:00 pm</li> <li>• 1st hour charge is waived if children are picked up by 3:15</li> <li>• Children not picked up by 3:15 pm will be signed in to the after school program</li> <li>• \$10 late fee per child per quarter hour after 5:30 pm</li> <li>• Payments processed via ACH on the 15th of the following month</li> </ul>

# Tune In!



## awakening seed summer camp • 2025

june 2 - july 11

### About the Program

The Awakening Seed summer program is approached in the same way as our regular curriculum, using the emergent curriculum model. We offer it as a creative and engaging option during June and July. Along with our all-school theme, we'll continue to emphasize the many aspects of Awakening Seed that set the school apart from other programs.

Our summer program is available for one-year-olds through children entering the 6th grade. This program is separate from the regular school year and is open to current and former Seeds, as well as children who attend other schools. Included in the educational program are: a wide range of art experiences, music, movement, water play, and outdoor recreational play. **Summer after school care is available till 5:30 PM daily for all age groups.**

### Tune In!

Since 1977, Awakening Seed School has provided a quality educational program for children in the Phoenix area, promoting creativity, innovation and healthy living. Our 2025 summer program, **Tune In!**, will be based entirely on songs. The developmentally appropriate curriculum for each age group will incorporate singing, movement, art, all types of music, immersion into the work of different musicians, performances, and composition. Each teacher will work with their class to develop a mini-study during each **two-week block**. Additionally, each class will have sensory experiences, social skills training, support for emotional regulation, and summer-friendly outdoor opportunities. A description of each group's offerings is in this brochure. Included in the program is a community service project, to be announced in early

summer. The Seed summer program concludes with the 2nd—6th graders' **34th Annual Way-Off Broadway Production**.

### Summer Classes

Children may attend weekly or for all six weeks.

**Students who sign up for the full six-week program will be given priority.** Toddlers and Preschool 3s have the option of 2, 3, or 5 days. Preschool 4s/5s and elementary students must sign up for five days.

Placement for summer classes is determined by age and won't necessarily line up with fall placement. Children placed in the Preschool 4s/5s class and older **MUST BE RELIABLY POTTY TRAINED. All 3s will be placed in the summer Preschool 3s class whether they are potty trained or not.**

six week  
enrollment  
rate reflects  
\$200 discount

### Registration

Early registration is recommended. Current students enrolled all six weeks for five days will be given priority for registration from **February 18-21**. After that date, spaces will open to other 6-week students beginning **February 24**. Individual week enrollment starts **March 3**. See the back of this brochure for information about rates and registration requirements. The enrollment form is included with this flyer.

### Fees and Deposits

All fees and deposits are non-refundable. Half of the summer tuition will be billed upon registration. The other half will be billed **May 1**. All payments will be processed via ACH/Gradelink. Summer tuition balances must be paid in full by **May 31** to guarantee enrollment.

# summer class descriptions

## Toddler 1s/2s

The summer program for toddlers is an extension of the regular school year for continuing students, and a transition period for children new to the school or to a new classroom/teacher. Setting up children for success in the year to come is a priority. In order for this to happen, the following components will be present:

- language immersion and practice to support establishment of school routines
- play-based curriculum that includes emerging themes (based on student interest)
- sensory activities
- daily movement activities
- consistent parent communications to facilitate transitions

**Enrollment for all six weeks is recommended. Enrolled students do NOT have to be potty trained.**



## Preschool 3s • Preschool 4s/5s

The preschool program gives students an experience that is similar to the regular school year, with more of an emphasis on art, creativity, and self-expression through play, especially water play. Additionally, the summer program is often a transition period for children new to the school or to a new classroom/teacher. Preschool students can be expected to be a part of:

- engaging emergent curriculum themes (based on student and teacher interests)
- art and sensory activities related to thematic studies
- social skills guidance through specific lessons and daily practice
- daily movement activities
- learning and practicing school routines

**Enrollment for two-week blocks or all six weeks is recommended. Students in the Preschool 4s/5s are required to be potty trained. All 3s will be enrolled in the summer Preschool 3s class, whether they are potty trained or not.**



## K-1 • 2nd-6th Grades

The elementary program is generally comprised of continuing Seed students, children new to the school, and returning alumni Seeds. The program is divided into 3 two-week blocks that will include visual and performing arts, including our annual Way-off Broadway production. Along with the arts emphasis, elementary students will engage in:

- visual arts and construction of props related to performances
- leadership training, mindfulness, and social skills
- daily movement/physical activity
- emphasis on kindness and how to be a community member

**Enrollment for two-week blocks or all six weeks is recommended.**

## Proof of Immunization

All new students must show proof of immunization prior to attending. Please bring a copy of your child's immunization record when you register your child.

## Summer Productions



The **2nd-6th graders** traditionally spend the last two weeks working on a musical production. The session for the **34th annual Way-off Broadway Production** will be held **June 30- July 11**, with the **final performance on Friday, July 11**. The **K-1** class may have a performance as well, which will be announced during the summer session if it is happening. Performances will likely be presented in person with a potential virtual option.

## Summer Shirts

# Tune In!



Each student who registers by **May 1** will receive a Seed summer program commemorative t-shirt. The cost of the shirt is included in the tuition. Please indicate shirt size on the registration form. Shirts will be delivered the first week of the summer program. **Shirts will only be guaranteed to students who enroll prior to May 1.**

## Juneteenth/ 4th of July

The Seed will be **closed on Thursday, June 19**, in observance of Juneteenth, and **Friday, July 4**, in observance of Independence Day.



## Internship Program

Our summer intern program is for students **ages 12-15 years** who are entering 7th grade or higher. Interns are required to apply by **March 7**, have an interest in working with children, and be flexible regarding placement, based on program need. The rate for interns is **\$150 per week**. Interns in the after school program will be charged the standard rate. Intern spaces are limited, so early application is recommended. Once all intern spots are filled, potential interns will be placed on a waiting list.



## For More Information

If you have any questions about the Seed, including school hours, tuition rates, school policies, lunch and snack, the after school program, the Parent Handbook and other general information, please check out our website at [www.awakeningseedsschool.org](http://www.awakeningseedsschool.org), or **CALL (602) 454-2606**.